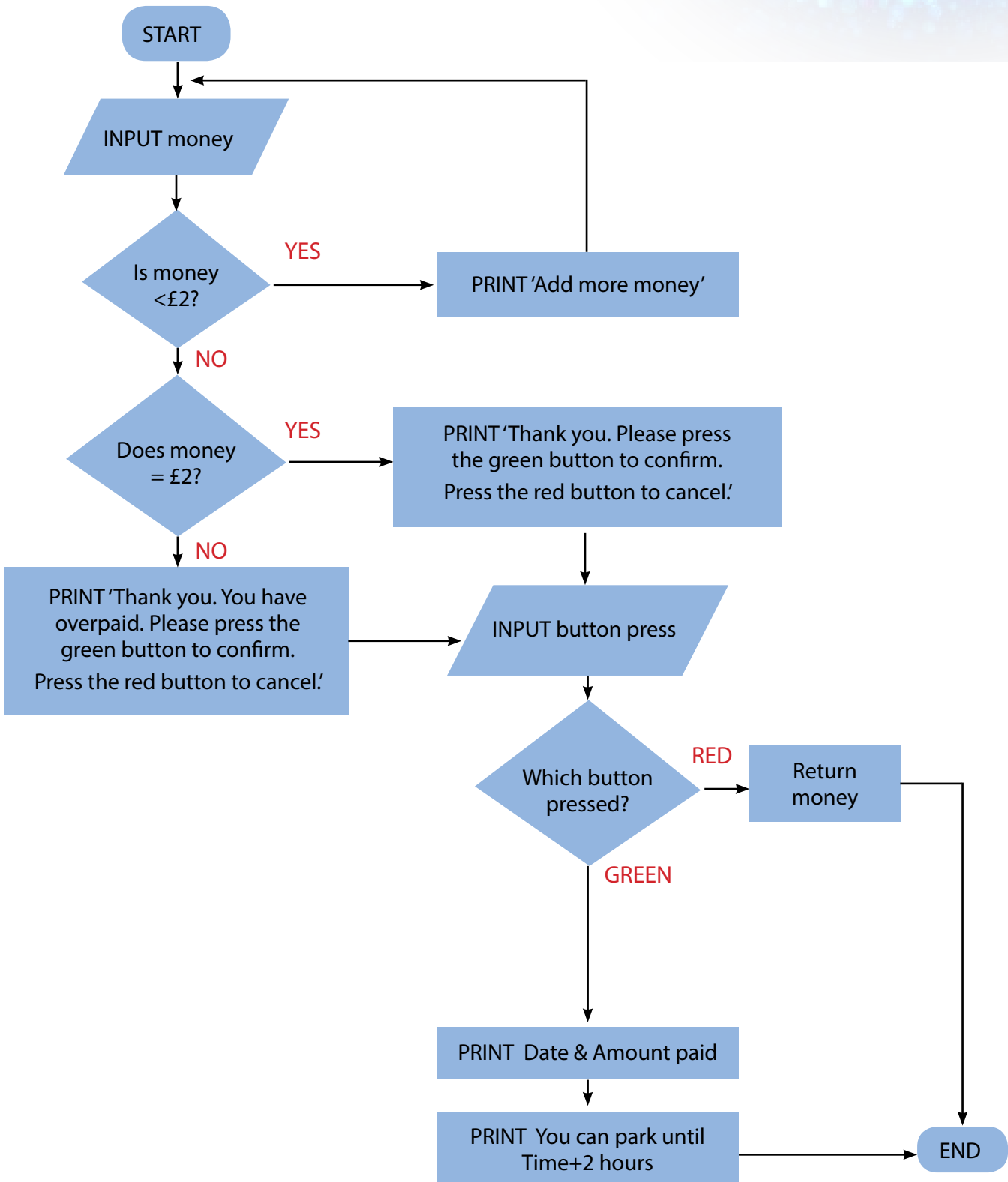


Algorithms in pseudocode and flow diagrams

Worksheet 2

Nav writes a program for printing pay and display car park tickets for a fixed two-hour stay.



Algorithms in pseudocode and flow diagrams



Worksheet 2

(a) A user enters £3. Explain what will happen.

(b) State two decisions which have to be made in this process.

(c) A user is issued this ticket from the system:

| |
|---------------------------|
| 19/07/2013 £3.00 |
| You can park until 14.21h |

State three facts you can work out from this ticket.

1. _____
2. _____
3. _____